

A T E N O
ARCHITECTURE STUDIO

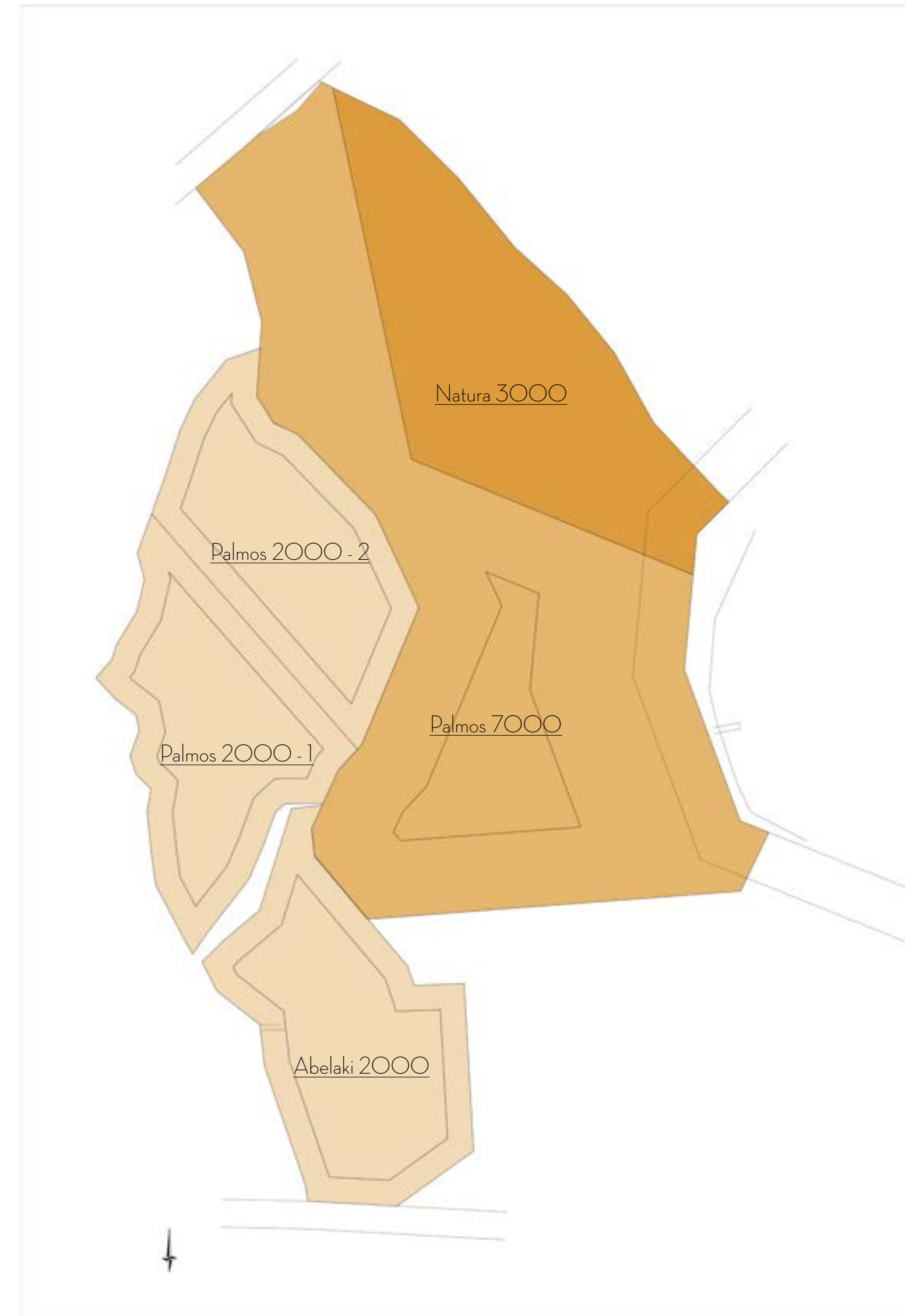
AMPHITHEATRO RESORT

Preliminary Masterplan

AMPHITHEATRO RESORT
General

Properties - Uses:

1. Abelaki 2000 - max 200 sq.m. Accommodation
2. Abelaki 7000 - max 500 sq.m. Retail
3. Pالمos 2000 - 1 - max 200 sq.m. Accommodation
4. Pالمos 2000 - 2 - max 200 sq.m. Accommodation
5. Natura 3000 - No Buildings Permitted



AMPHITHEATRO RESORT
General

Basic Principles:

A. Accommodation Facilities

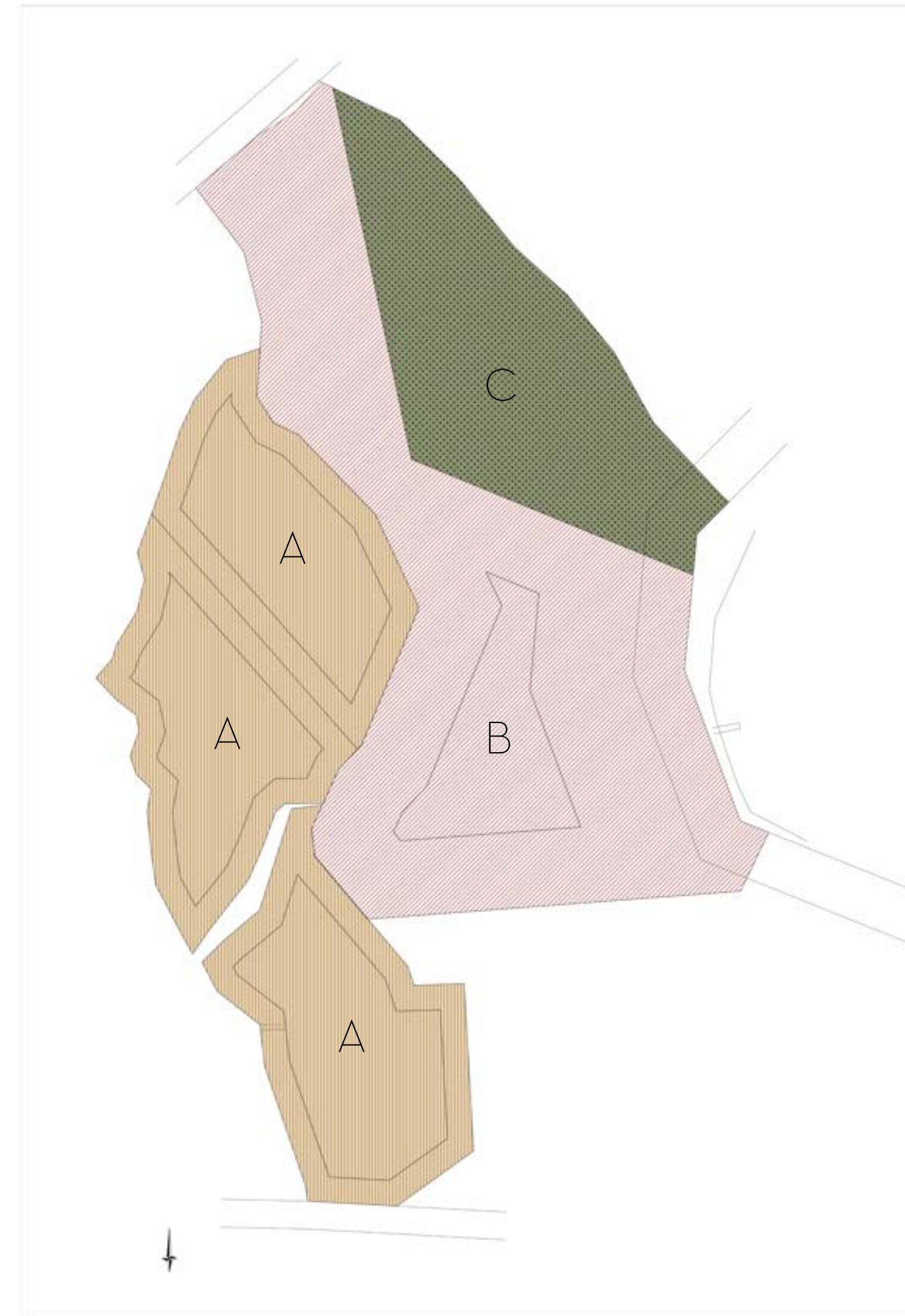
- _ 6 Separate Facilities
- _ 1 Villa - 2 Houses - 4 Apartments
- _ Accommodation of 26 People
- _ High End Services - Exclusive Clients

B. Retail Facilities

- _ Recreation - Dining & Retail Center
- _ Open to Public - Multifunctional Park
- _ Seaside - Plaza Effect
- _ Mainly Boat Accessible - Car Friendly
- _ Flexible Spaces & Pop-Up Capability

C. Cultural Facilities

- _ Public Amphitheater, Sports & Playground Facilities
- _ Respectful Utilization of Natura 2000 Territory
- _ Mild Interventions - Conservation of Natural Environment



AMPHITHEATRO RESORT
General

Access:

- Car Access

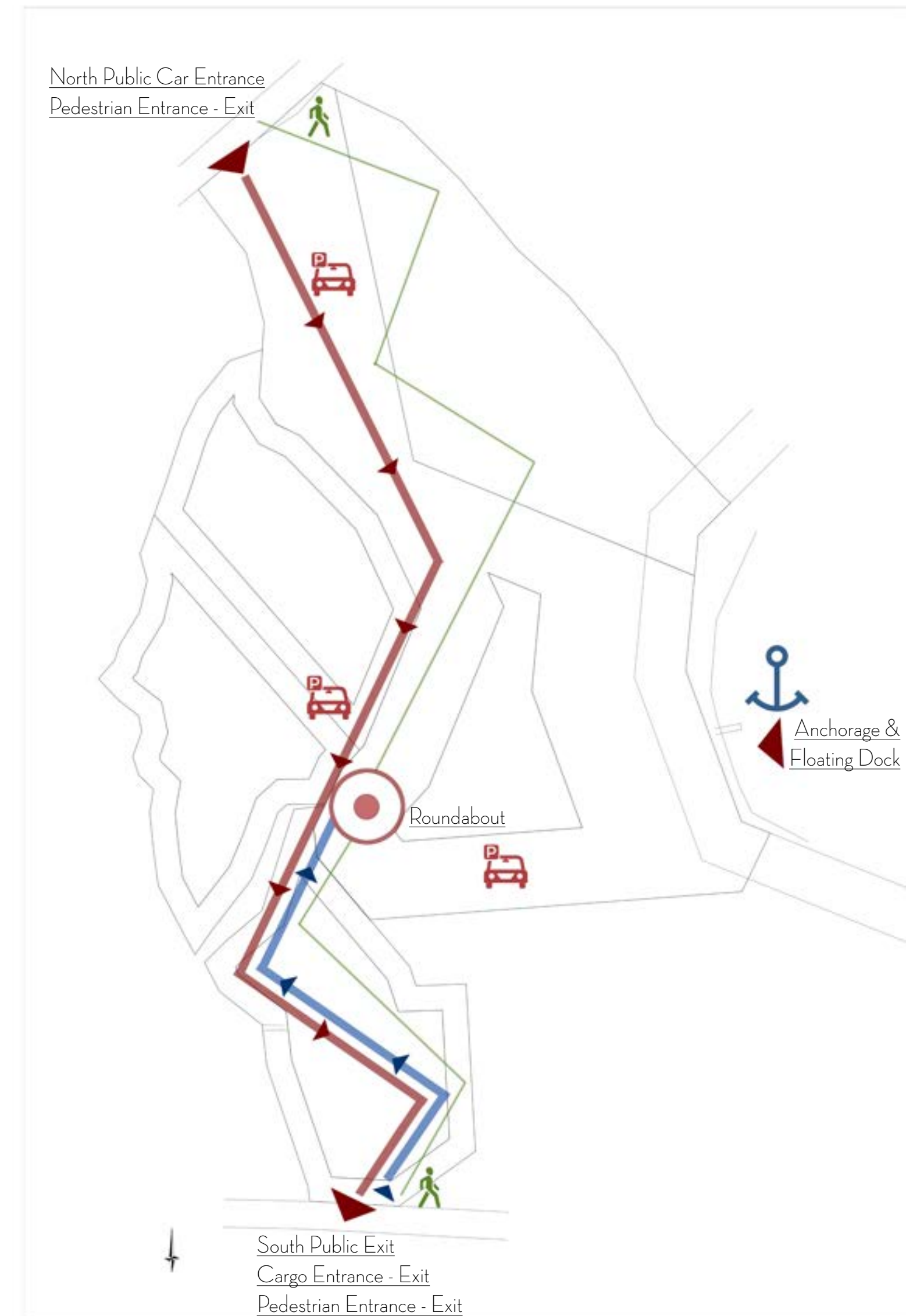
- _North Public Entrance from Local Road
- _One-Lane Public Road Crossing Facilities
- _Roundabout Ring in Retail Park Entrance
- _Two-Lane Road Part for Maintenance, Cargo - Public Exit
- _South Maintenance - Cargo Entrance & Exit to Local Road
- _South Public Exit to Local Road
- Scattered Open-Air Parking Lots throughout the Resort

- Boat Access

- _Anchorage in Abelaki Bay
- _Floating Dock for Ribs & Smaller Sailing Boats

- Pedestrian Access - Transport

- _5 min. walk from Vathi to South Pedestrian Entrance
- _Constant Mini Van Transport from Vathi to Park Entrance



Retail Park Contents Brief:

Permanent Structures

Main Use

- Seaside Restaurant (max cap. 300 people)

Plaza Scattered Shops & Stores

- Info Pavillion
- Cafe
- Remote Cocktail Bar
- Cantines x2 (Street Food, Gelato)
- Delicatessen/Local Products
- Shops x3 (Swimwear/Accessories, Hair Salon/Massage)
- Pop - Up Shops x2
- Tobacco/Kiosk
- Real Estate Consultant's Office
- Watersports/Boat Rentals
- Common Hygiene Facilities for Public & Staff

Ephemeral/Pop - Up Stores

- Installations for Scattered Ephemeral Shops x4
- Installations for Scattered Ephemeral Cantines x3

Cultural Facilities

- Open Air Amphitheater
 - Playground
 - Yoga Space

Parking Spaces

- Parking Lots (90 - 100)

Beach Facilities

- Deck Chairs
- Watersports
- Volleyball Court
- Bar Tables & Chairs

AMPHITHEATRO RESORT
Retail Park

	<u>Permanent Structures</u>	<u>Semi - Permanent Structures</u>	<u>Ephemeral/Pop - Up Structures</u>
Count as closed - built Space	✓	✗	✗
Necessary for a shop's Permit	✓	✗	✗
Distance 30m from Seafront	✓	✗	✗
Can be Moved/Removed	✗	✗	✓
Can have MEP Installations	✓	✓	✓
Operate with a Special Permit	✗	✗	✓
Operate Under another Shop's Permit as Extensions	✗	✓	✓

AMPHITHEATRO RESORT
Retail Park

Permanent Structures



Semi - Permanent Structures



Ephemeral/Pop - Up Structures



Proposal 1:

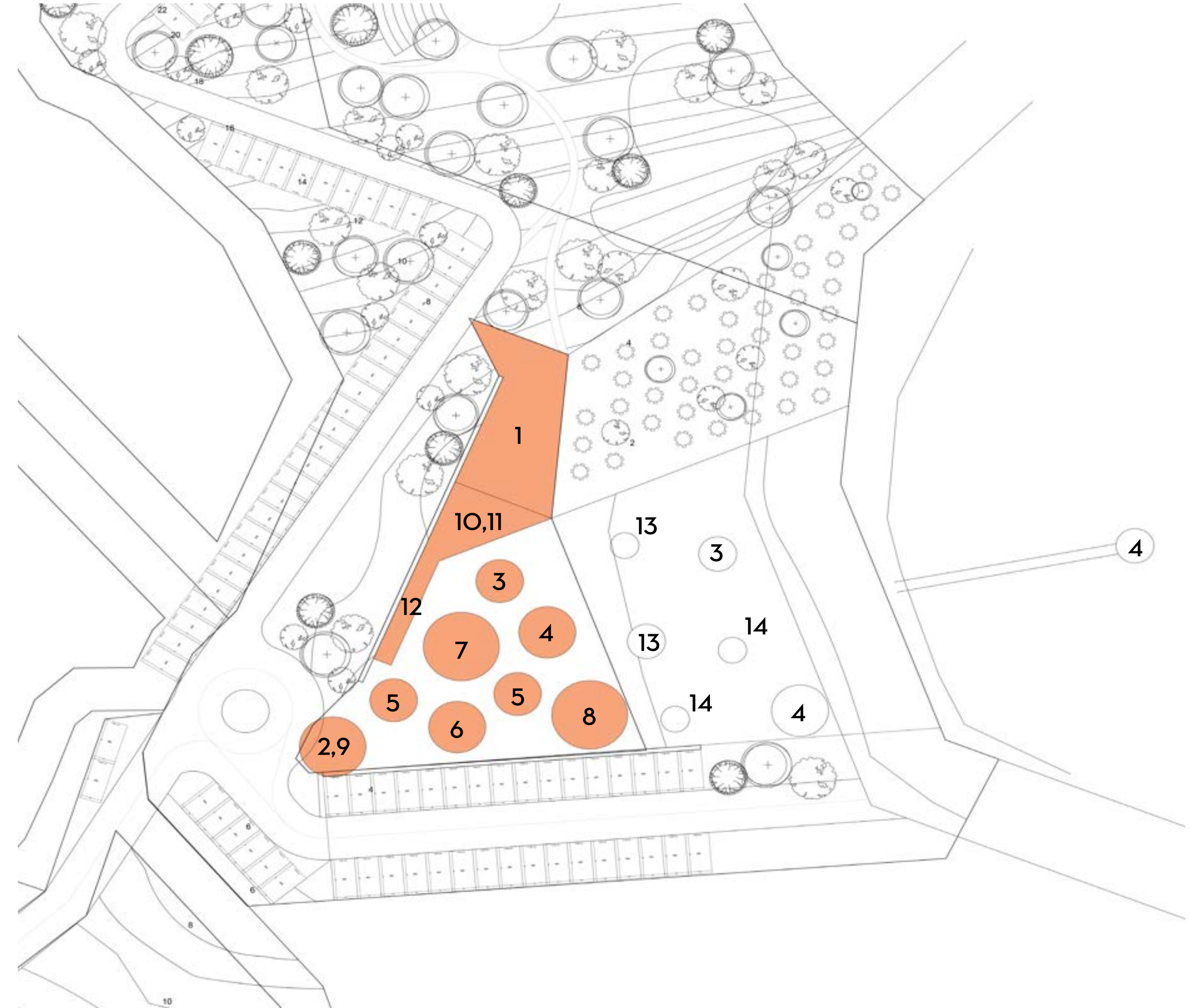
Permitted Shops & Stores

aprox. 500 sq.m Main Spaces (maximum)

1. Seaside Restaurant aprox.	200 sq.m.
2. Info Pavillion	10 sq.m.
3. Cafe	20 sq.m.
4. Remote Cocktail Bar	20 sq.m.
5. Cantines x2	20 sq.m.
6. Delicatessen/Local Products	30 sq.m.
7. Shops x3	50 sq.m.
8. Pop - Up Shops x2	30 sq.m.
9. Tobacco/Kiosk	10 sq.m.
10. Real Estate Consultant's Office	25 sq.m.
11. Watersports/Boat Rentals	25 sq.m.
12. Common Hygiene Facilities	60 sq.m.

Ephemeral/Pop - Up Stores

- 13. Installations for Scattered Ephemeral Shops x4
- 14. Installations for Scattered Ephemeral Cantines x3



Proposal 1:

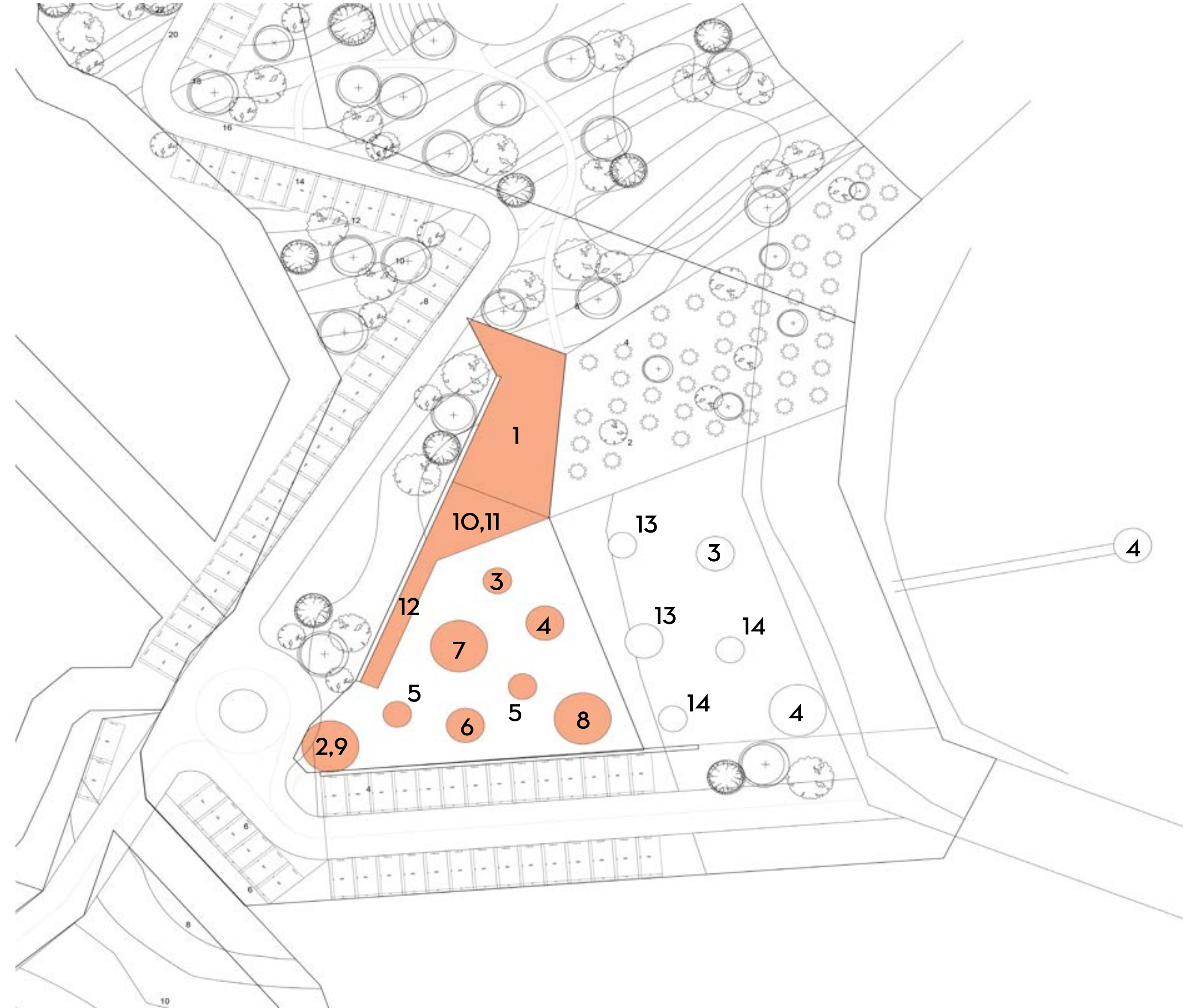
Permitted Shops & Stores

aprox. 390 sq.m Main Spaces (maximum) & extra Auxiliary

1. Seaside Restaurant aprox.	160 sq.m.
2. Info Pavillion	10 sq.m.
3. Cafe	10 sq.m.
4. Remote Cocktail Bar	15 sq.m.
5. Cantines x2	15 sq.m.
6. Delicatessen/Local Products	30 sq.m.
7. Shops x3	30 sq.m.
8. Pop - Up Shops x2	15 sq.m.
9. Tobacco/Kiosk	10 sq.m.
10. Real Estate Consultant's Office	20 sq.m.
11. Watersports/Boat Rentals	15 sq.m.
12. Common Hygiene Facilities	60 sq.m.

Ephemeral/Pop - Up Stores

- 13. Installations for Scattered Ephemeral Shops x4
- 14. Installations for Scattered Ephemeral Cantines x3









ATENO

ARCHITECTURE STUDIO

E: ATENO.STUDIO@OUTLOOK.COM

A: LOUISE RIENCOURT 64, ATHENS, 11523

W: ATENO.STUDIO